

Magic Tube

This quick and easy project is a 3 in 1! Wear it as a scarf, cowl, halter top, or dress (depending on how long you make it).

Courtesy of Showers of Flowers, Designed by Sherrie Chadderdon, www.showersofflowers.com

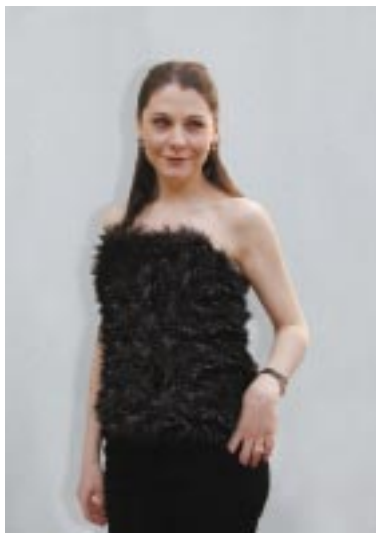
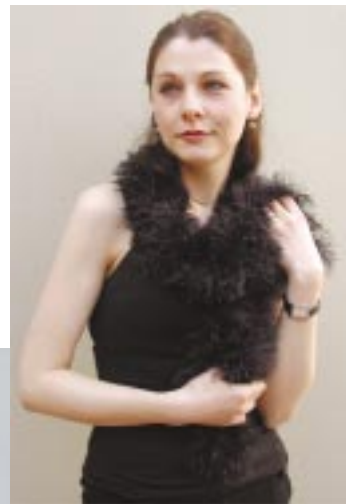
Materials:

132 yds of an eyelash yarn (I used 2 skeins of Fizz)
19 US15 mm 24"/60 cm circular needle

Directions:

Cast on 28 sts and knit in the round for 60" or until desired length.

Bind off as follows: K1, *YO, pass knit stitch over the YO. One stitch remains on the needle. K1, pass the first stitch over the second, One stitch remains on the needle.* Repeat between * across the row.



Detail of Yarn