

Row 6: K1, *ssk, k1, yo, k2tog, yo, k5, yo, ssk, yo, k1, k2tog, k1.

Repeat from * across.

Row 8: K1, *ssk, yo, k2tog, yo, k7, yo, ssk, yo, k2tog, k1.

Repeat from * across.

Row 10: K1, *(ssk, yo) 2X, k7, (yo, k2tog) 2X, k1. Repeat from * across.

Row 12: K1, *yo, ssk, yo, k3, k2tog, k1, ssk, k3, yo, k2tog, yo, k1.

Repeat from * across.

Row 14: K2, *yo, ssk, yo, k2, k2tog, k1, ssk, k2, yo, k2tog, yo, k3.

Repeat from * across. End last repeat k2.

Row 16: K3, *yo, ssk, yo, k1, k2tog, k1, ssk, k1, yo, k2tog, yo, k5.

Repeat from * across. End last repeat k3.

Row 18: K4, *yo, ssk, yo, k2tog, k1, ssk, yo, k2tog, yo, k7.

Repeat from * across. End last repeat k4.

Row 20: K4, *(yo, k2tog) 2X, k1, (ssk, yo) 2X, k7.

Repeat from * across. End last repeat k4.

Repeat these 20 rows for pattern.

Instructions:

CO 105 sts.

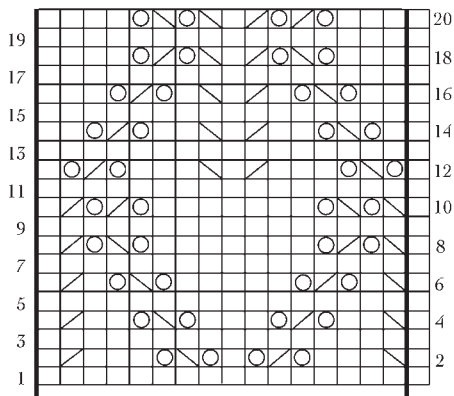
Knit 7 rows (garter stitch), slipping the first st purlwise with yarn in front (syif).

Row 8 (and all WS rows): Syif, k3, place marker, purl across row to last 4 sts, place marker, k4

Row 9 (and all RS rows): Syif, k3, pass marker (pm), knit across row in Gothic Leaf pattern, pm, k4.

Repeat rows 1-20 of pattern for a total of 12 times. This completes first half of shawl. Set aside.

With the other circular needle, make second half of shawl exactly like the first, ending the pattern at row 18 instead of row 20 on the 12th repeat. Line up both circular needles with wrong sides of shawl facing each other. Graft together in stockinette stitch. Weave in ends and dress shawl.



16 - st repeat

□ knit 1 stitch

▤ ssk (slip, slip, knit)

▥ knit 2 together

○ yarn over